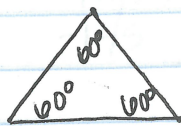
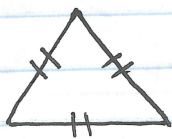
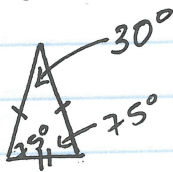


## Classifying Triangles

Equilateral Triangle: All 3 sides have the same length and all angles are the same.

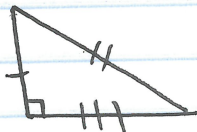


Isosceles Triangle: only 2 sides have the same length and angles.

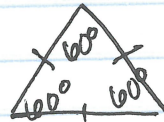
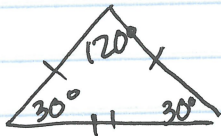


$$180 - 30 = 150 = \frac{150}{2} = 75^\circ$$

Scalene Triangle: No sides have the same length.



Triangles can be classified by angles



Isosceles obtuse Triangle

Equilateral Acute Triangle



Scalene Right Triangle