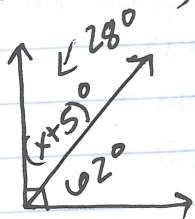


Complementary and Supplementary Angles
 Complementary Angles: 2 angles w/ a sum of 90°

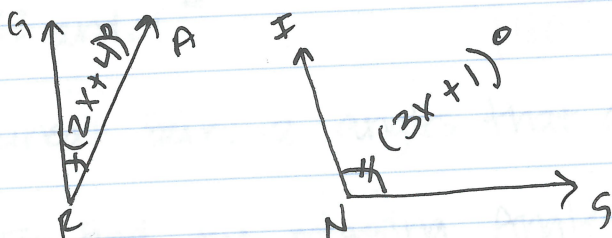
Ex.



$$\begin{array}{r} 62 + x + 5 = 90 \\ 67 + x = 90 \\ \underline{-67} \quad \underline{-67} \\ \boxed{x = 23} \end{array}$$

$$\left. \begin{array}{l} 62 + 23 + 5 = 90 \\ 90 = 90 \checkmark \end{array} \right\}$$

Supplementary Angle: 2 angles w/ a sum of 180°
 Ex. $\angle GRA$ and $\angle INS$ are supplementary. Find x .



$$2x + 4 + 3x + 1 = 180$$

$$\begin{array}{r} 5x + 5 = 180 \\ \underline{-5} \quad \underline{-5} \end{array}$$

$$\frac{5x = 175}{5} \quad \frac{5}{5}$$

$$\boxed{x = 35}$$

$$90^\circ \quad 90^\circ$$

$$180^\circ \quad 180$$

Pg. 16 (1-24)