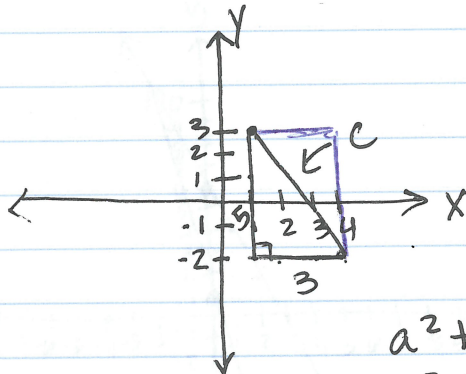


Distance on the coordinate Plane

Find the distance between 2 points using
Pythagorean Theorem. $(1, 3)$ and $(4, -2)$
 $\begin{matrix} x & y \\ 1 & 3 \\ 4 & -2 \end{matrix}$



$$a^2 + b^2 = c^2$$

$$5^2 + 3^2 = c^2$$

$$25 + 9 = c^2$$

$$\sqrt{34} = \sqrt{c^2}$$

$$5.8 \approx c$$