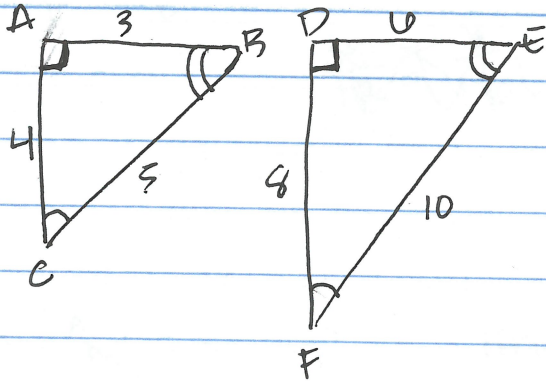


Similar and Congruent Figures - Scale Factor

Similar Figure: Figures that have the same shape and angles but are different sizes. \sim

Congruent Figure: same size, same shape \cong



Scale Factor:

$$\frac{3}{6} = \boxed{\frac{1}{2}}$$

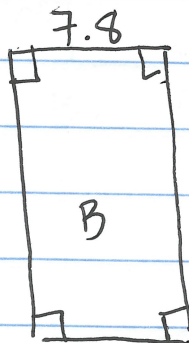
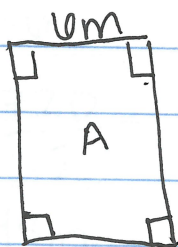
$$\frac{4}{8} = \boxed{\frac{1}{2}}$$

$$\frac{5}{10} = \boxed{\frac{1}{2}}$$

Ex. Find the ratio of the lengths (Scale Factor) of the corresponding sides.

$$\frac{\overline{AB}}{\overline{DE}} = \frac{3}{6} = \frac{1}{2} \leftarrow \text{scale factor.}$$

Ex.



$$\frac{6}{7.8} = \boxed{\frac{10}{13}}$$