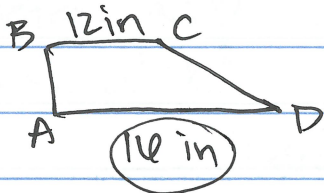
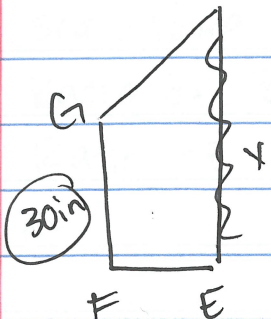


Scale Factor + Proportions.



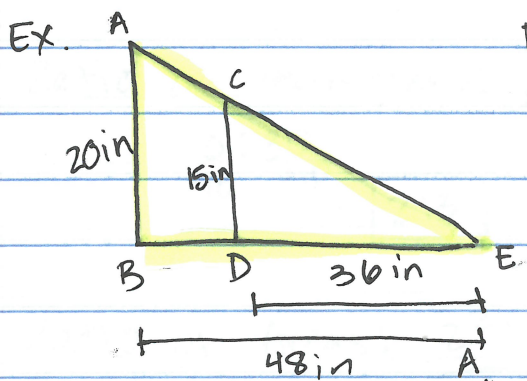
$$\frac{30}{16} = \frac{x}{16}$$

$$\frac{30}{12} = \frac{x}{16}$$

$$12x = 480$$

$$\frac{12x}{12} = \frac{480}{12}$$

$$x = 40 \text{ in} \leftarrow \overline{EH}$$



Find \overline{BD} and \overline{BE}

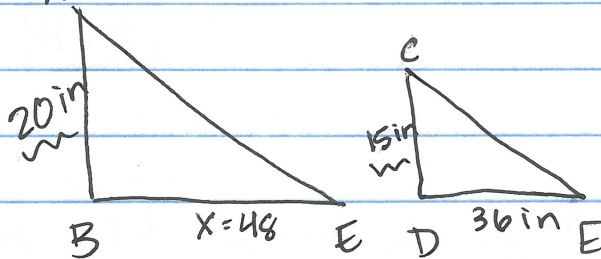
$$\overline{BE} = 48 \text{ in}$$

$$\overline{BD} = 12 \text{ in}$$

$$\frac{20}{15} = \frac{x}{36}$$

$$\frac{15x}{15} = \frac{720}{15}$$

$$x = 48 \text{ in}$$



$$48 \text{ in} - 36 \text{ in} = 12 \text{ in} \leftarrow \overline{BD}$$