

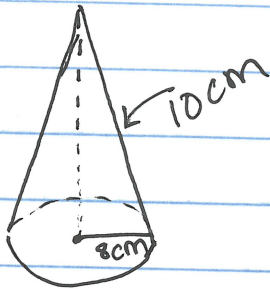
Surface Area of Cones

$$LA = \pi r l$$

$$SA = LA + B$$

\uparrow
 πr^2

EX.



$$LA = 3.14(8)(10)$$

$$LA = 251.2 \text{ cm}^2$$

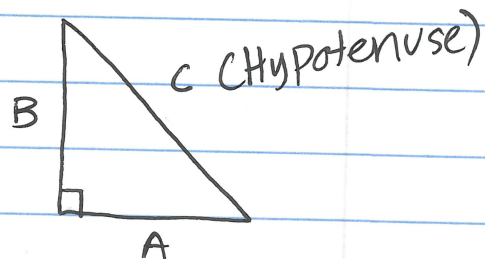
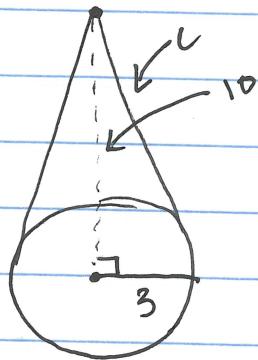
$$SA = 251.2 + 3.14(8^2)$$

$$251.2 + 200.96$$

$$SA = 452.16 \text{ cm}^2$$

Pythagorean Theorem

$$a^2 + b^2 = c^2$$



$$a^2 + b^2 = c^2$$

$$3^2 + 10^2 = c^2$$

$$9 + 100 = c^2$$

$$\sqrt{109} = \sqrt{c^2}$$

$$10.4 = c$$

Pg. 547 (1-39 ODDS)