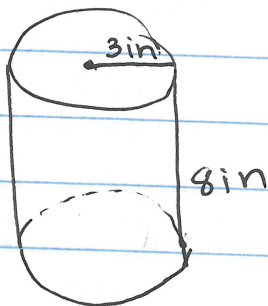


Surface Area of Cylinders

Ex.



$$\text{Lateral Area} = 150.72$$

$$\text{Surface Area} = 207.24$$

Lateral Area: circumference \cdot height
 $(2\pi rh)$

Surface Area: $LA + 2B$
 $2\pi rh + 2(\pi r^2)$

Pg. 547 (10-12, 15-16, 18, 19, 21, 22)

$$10.) 477.28 \text{ cm}^2 \approx 477 \text{ cm}^2$$