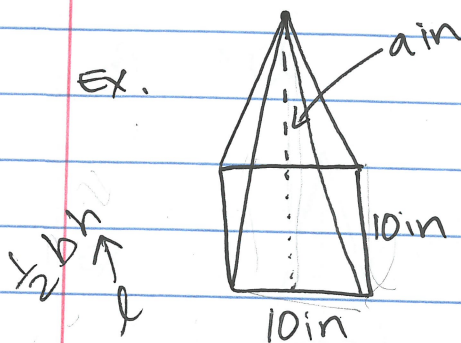


Surface Area of Pyramids

Ex.



$$LA = \frac{1}{2} P l$$

\leftarrow perimeter of base
 \leftarrow slant height

$$LA = \frac{1}{2} (40)(9)$$

$$LA = 180 \text{ in}^2$$

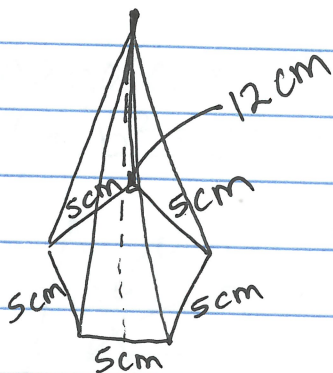
$$SA = \frac{1}{2} P l + B$$

\leftarrow area of base

$$SA = 180 + (10 \cdot 10)$$

$$SA = 280 \text{ in}^2$$

Ex.



$$LA = \frac{1}{2} P l$$

$$LA = \frac{1}{2} (25)(12)$$

$$LA = 150 \text{ cm}^2$$

$$SA = 150 + 120$$

Area of Base: 120 cm^2

$$SA = 270 \text{ cm}^2$$