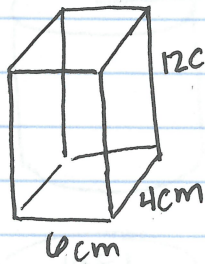


Volume of Prisms

$$\text{Volume} = Bh$$

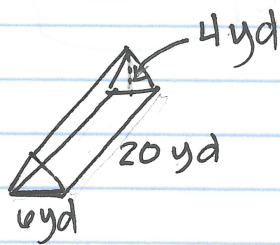
↑
area of base

Ex.



$$V = (6 \times 4)(12)$$
$$12 \text{ cm. } V = 288 \text{ cm}^3$$

Ex.



$$V = Bh$$
$$V = \frac{1}{2}bh(h)$$

$$V = \frac{1}{2}(6)(4)(20)$$

$$V = 240 \text{ yd}^3$$

PA Pg. 555 (13, 6, 23)