

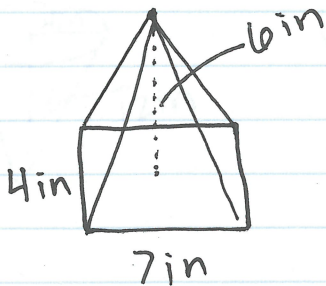
# Volume of Pyramids

$$V = \frac{Bh}{3}$$

OR

$$V = \frac{1}{3} Bh$$

Ex.

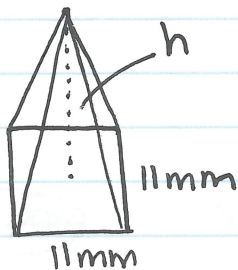


$$V = \frac{Bh}{3}$$

$$V = \frac{(7 \cdot 4)(6)}{3}$$

$$V = 56 \text{ in}^3$$

Ex.



$$V = 1452 \text{ mm}^3$$

$$V = \frac{Bh}{3}$$

$$1452 = \frac{(11 \cdot 11)h}{3}$$

$$\frac{4356}{121} = \frac{121h}{121}$$

$$36 \text{ mm} = h$$